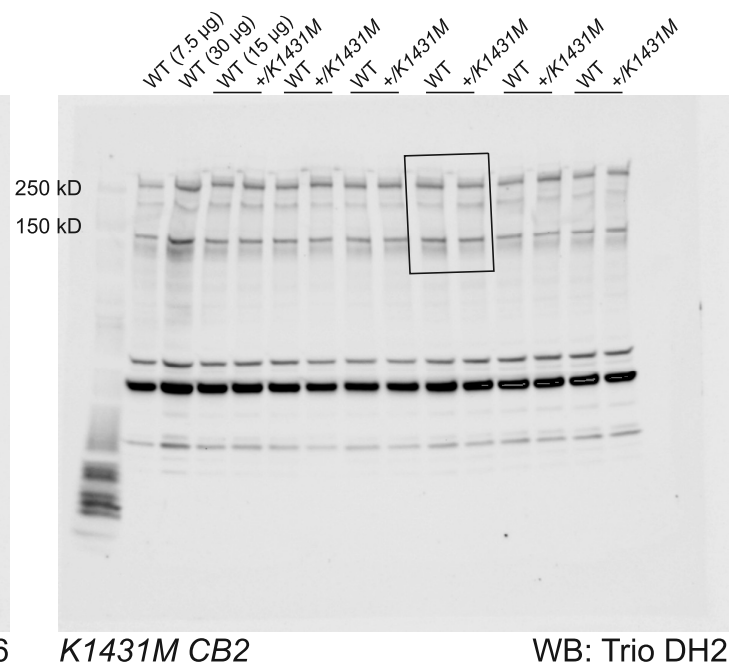
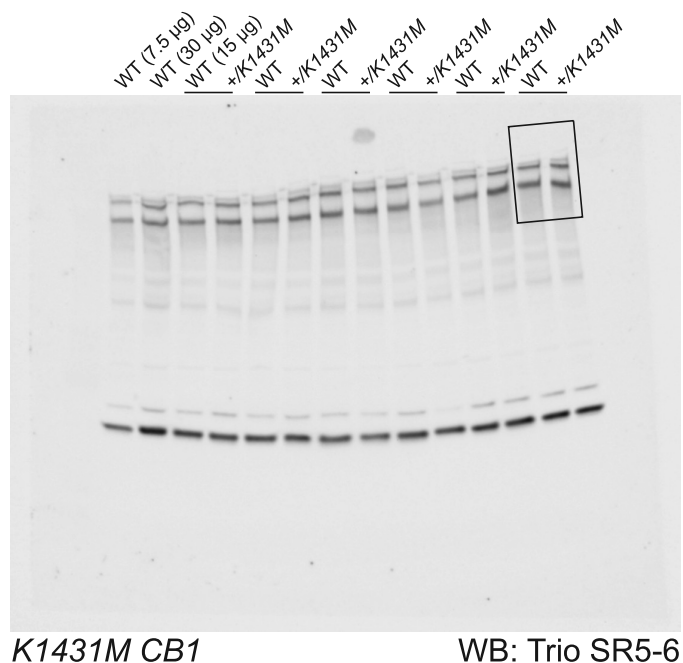
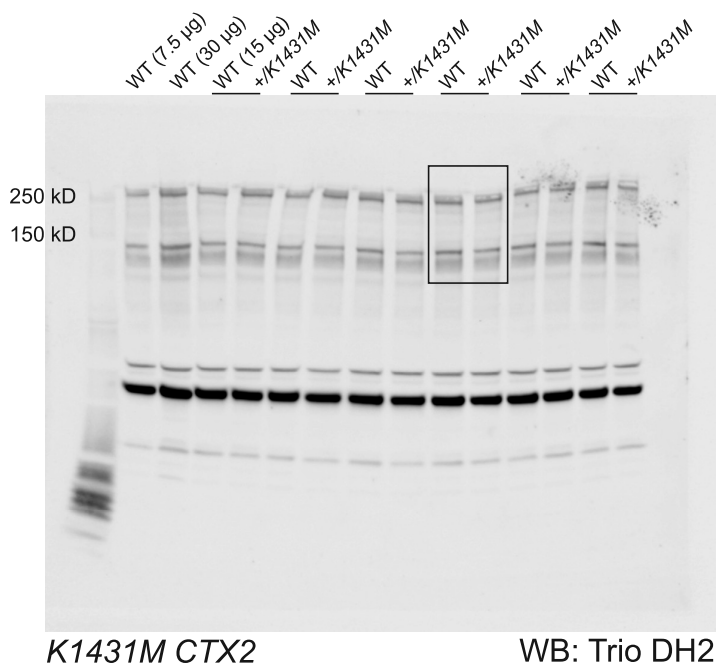
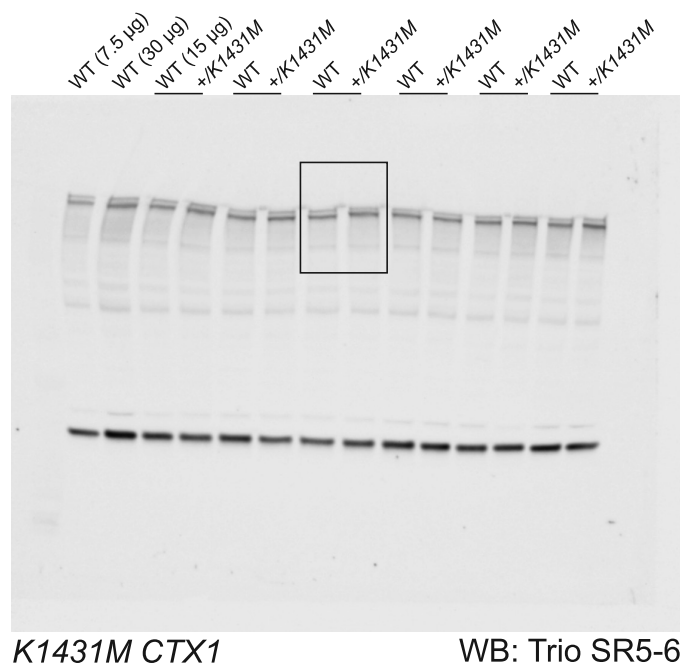
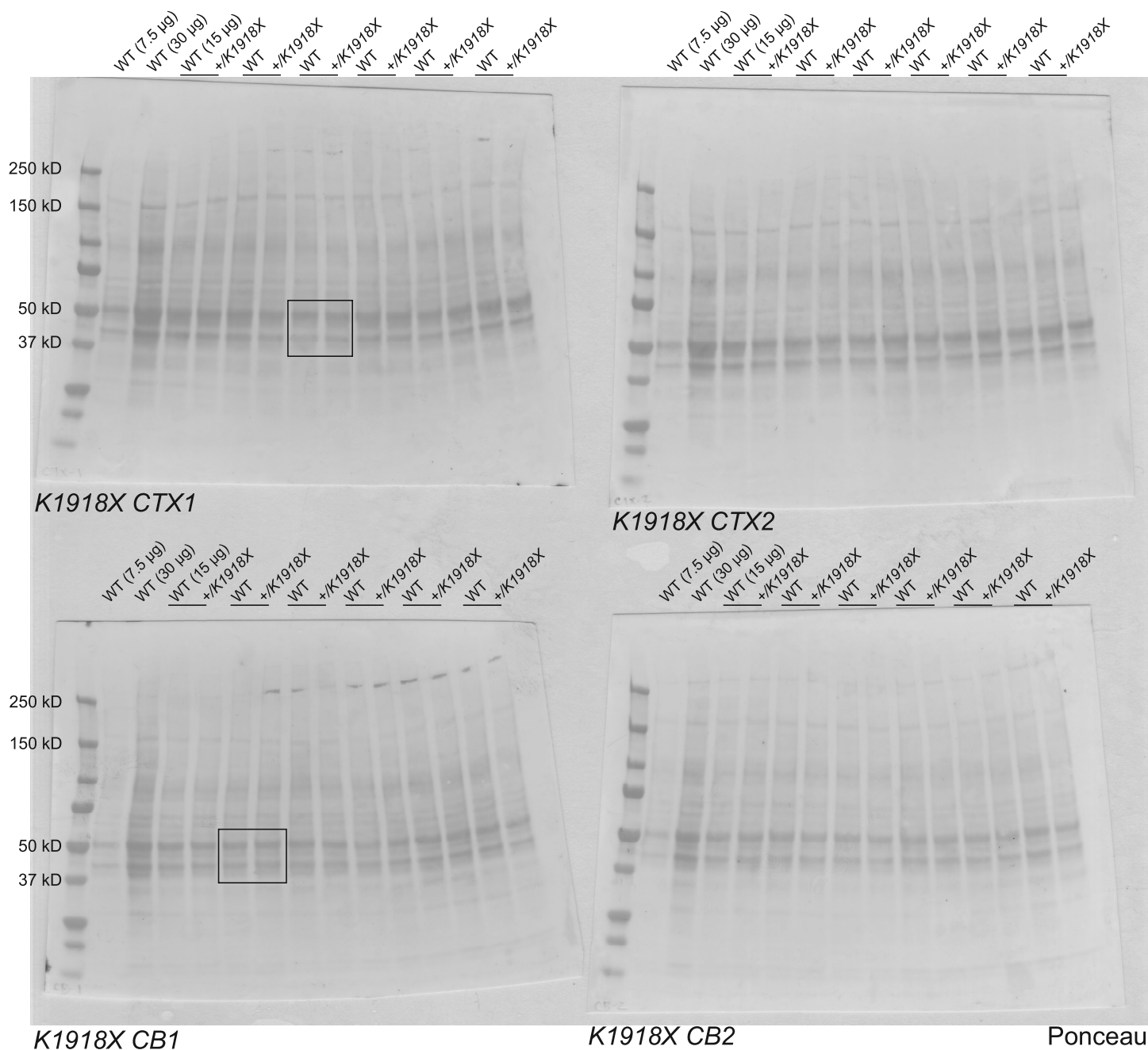


Figure 1-figure supplement 1-source data 2. Original membranes corresponding to Figure 1-figure supplement 1, panel D and panel H.

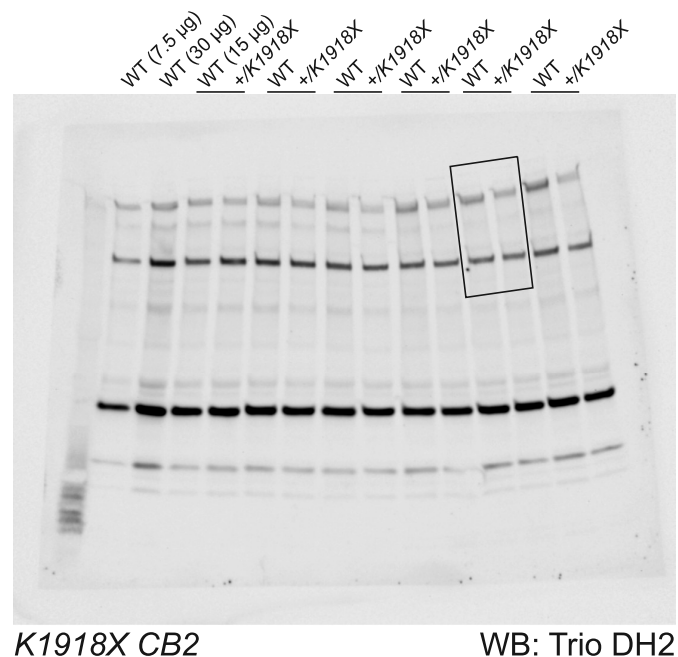
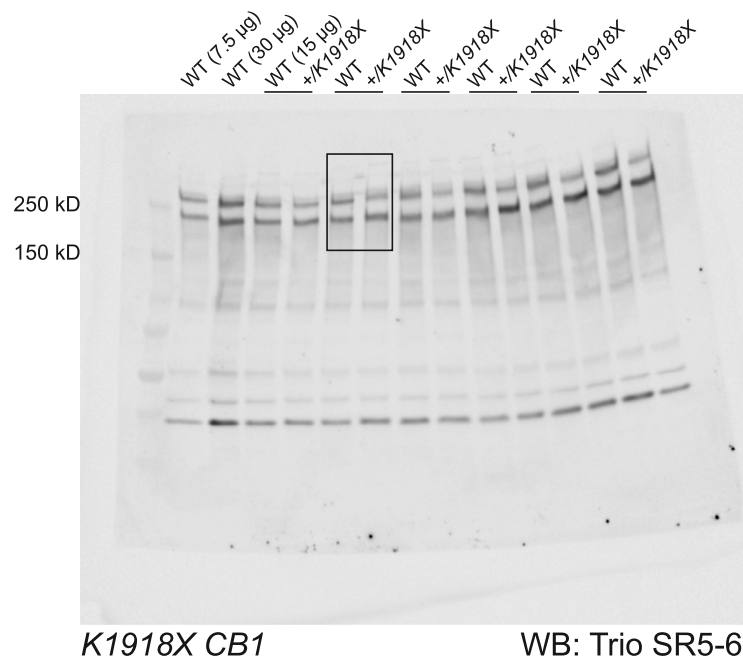
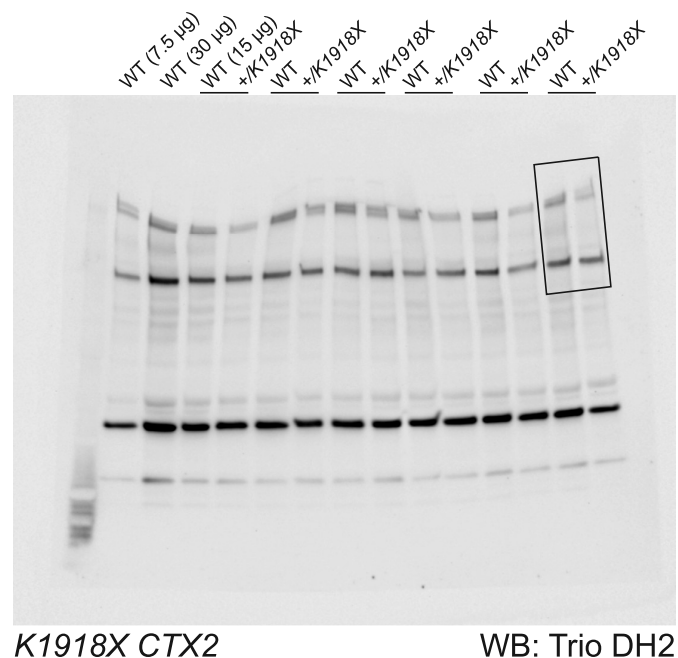
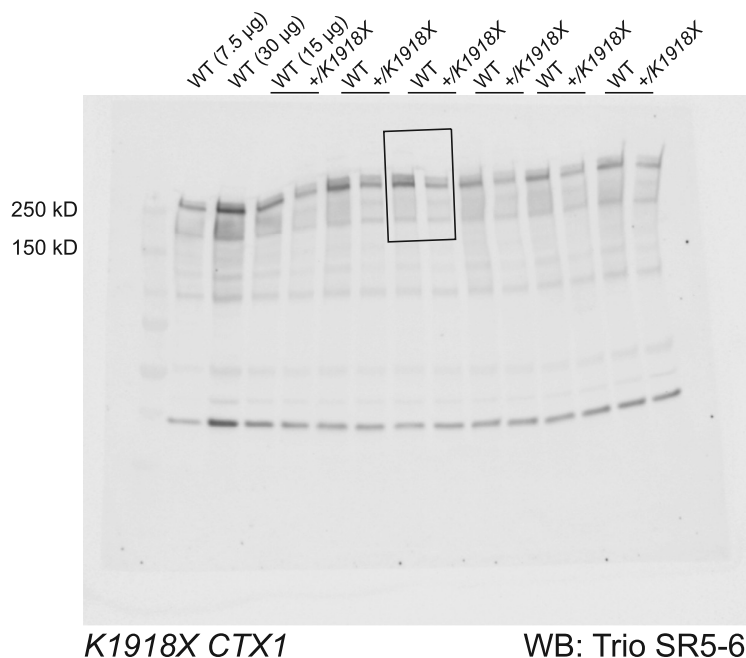
15 µg cortical (CTX) or cerebellar (CB) brain lysates from P42 paired littermate pups were separated by gel electrophoresis and stained by Ponceau S prior to blotting. 7.5 µg and 30 µg WT brain lysate were included as internal loading controls. Lines denote WT - +/K1431M littermate pairs. Boxes indicate cropped images used in final figure.



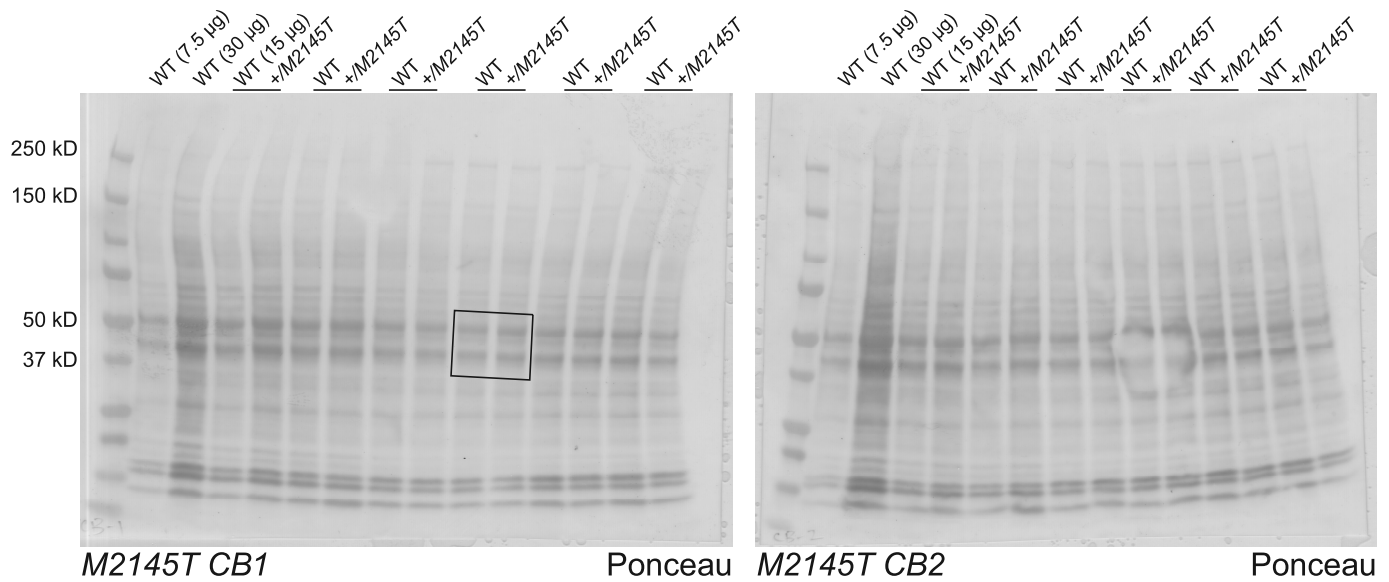
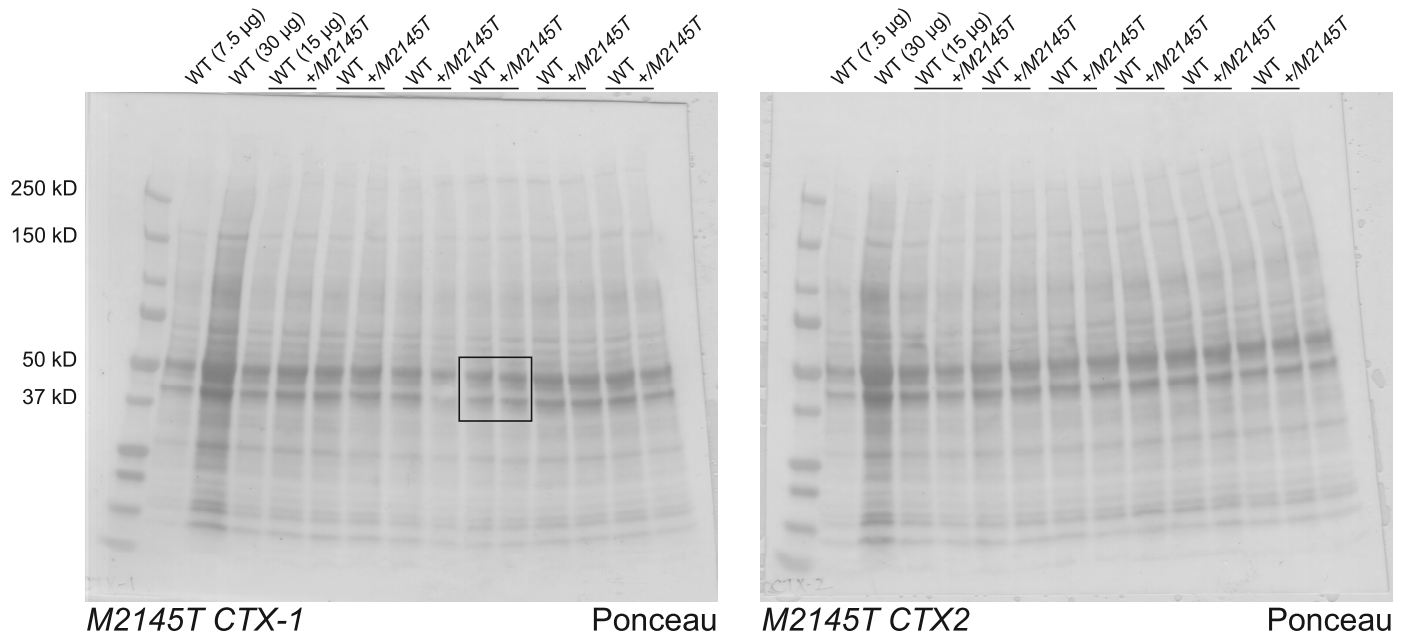
Membranes were blotted for Trio isoforms (Trio9S (263 kDa), Trio9L (277 kDa), Trio8 (217 kDa), Duet (145 kDa)) with an anti-Trio SR5-6 antibody (left) or anti-Trio DH2 antibody (right). Lines denote WT - +/K1431M littermate pairs. Boxes indicates cropped images used in final figure.



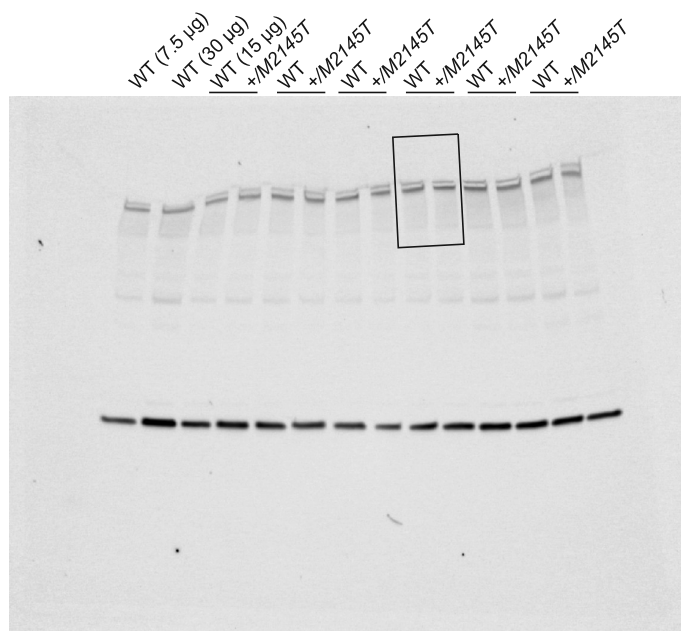
15 µg cortical (CTX) or cerebellar (CB) brain lysates from P42 paired littermate pups were separated by gel electrophoresis and stained by Ponceau S prior to blotting. 7.5 µg and 30 µg WT brain lysate were included as internal loading controls. Lines denote WT - +K1918X littermate pairs.



Membranes were blotted for Trio isoforms (Trio9S (263 kDa), Trio9L (277 kDa), Trio8 (217 kDa), Duet (145 kDa)) with an anti-Trio SR5-6 antibody (left) or anti-Trio DH2 antibody (right). Lines denote WT - +/K1431M littermate pairs.

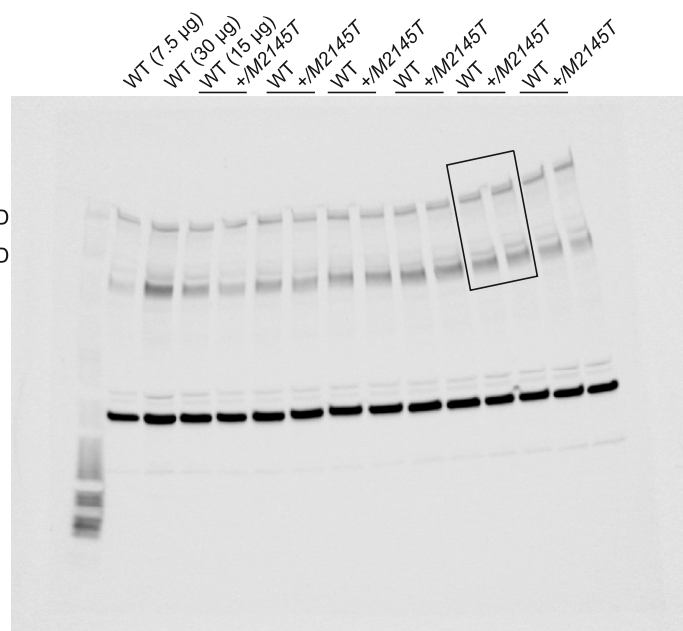


15 µg cortical (CTX) or cerebellar (CB) brain lysates from P42 paired littermate pups were separated by gel electrophoresis and stained by Ponceau S prior to blotting. 7.5 µg and 30 µg WT brain lysate were included as internal loading controls. Lines denote WT - +/M2145T littermate pairs.



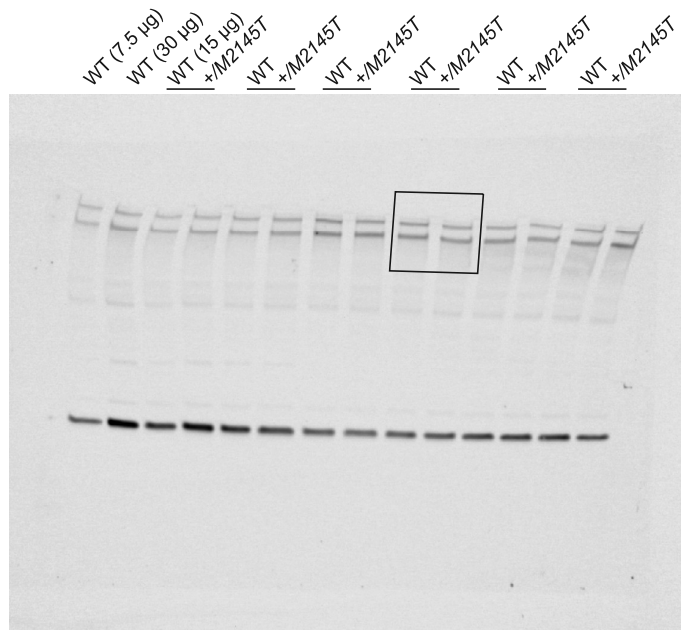
M2145T CTX1

WB: Trio SR5-6



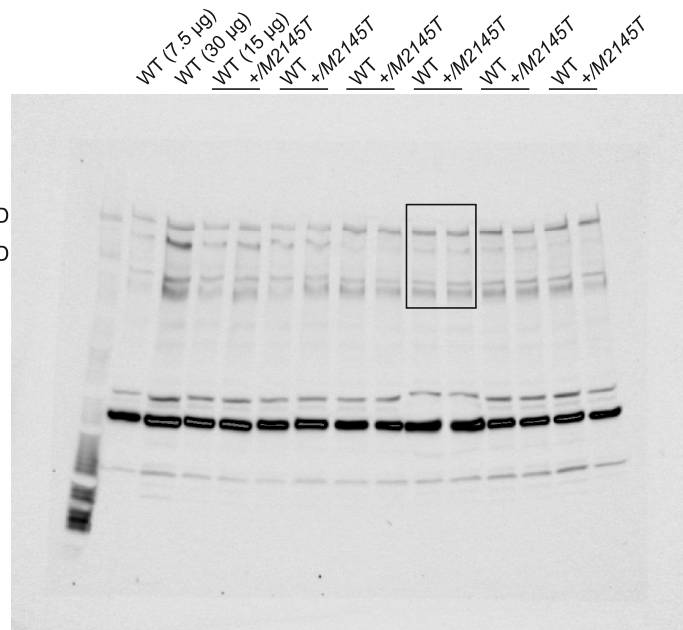
M2145T CTX2

WB: Trio DH2



M2145T CB1

WB: Trio SR5-6



M2145T CB2

WB: Trio DH2

Membranes were blotted for Trio isoforms (Trio9S (263 kDa), Trio9L (277 kDa), Trio8 (217 kDa), Duet (145 kDa)) with an anti-Trio SR5-6 antibody (left) or anti-Trio DH2 antibody (right). Lines denote WT - +/M2145T littermate pairs.